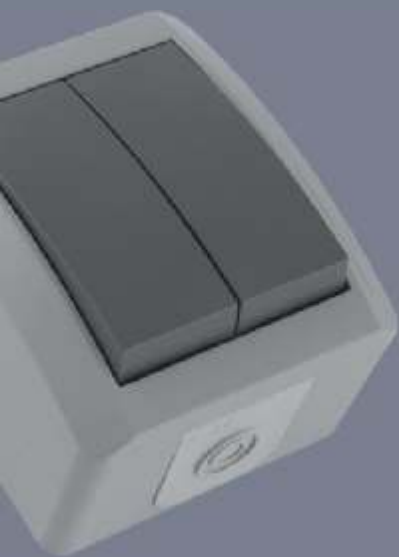


SET Q OG



- Surface mounting
- Quality and robust products, for long lasting and frequent use
- Reliability and durability
- Manufactured in line with European standards
- Protection level: IP 44 (protection against splashing water)
- Complete range in white and gray colour
- Recognizable and modern design
- Switches are made with screw and screwless connection



Set Q OG is production program of switches and socket-outlets, intended for surface mounting and it is used where the installation is carried out on the wall, from residential to business facilities, including the production halls, storages, garages, basements, etc.

Set Q OG has the widest product range among the surface mounting programs in the region. The complete product range is available in white and grey color.

The protection level is IP44 (protection against splashing water).

Set Q OG program has been designed by young Bachelor of Applied Arts (Industrial Design Section) who won the internal competition for the best design of switches and socket outlets organized by Metalka Majur with intention both to help young talented people and improve design of its products in the same time.





Two-pole socket-outlet
IEC 60884-1, CEE7
16A/250V; IP 44

Article No.:
12.01.050 (ceramic body)
12.01.051 (polycarbonate body)

Pack:
20 pcs.



Double horizontal
two-pole socket-outlet
IEC 60884-1, CEE7
16A/250V; IP 44

Article No.:
12.01.052 (ceramic body)
12.01.053 (polycarbonate body)

Pack:
20 pcs.



Double vertical
two-pole socket-outlet
IEC 60884-1, CEE7
16A/250V; IP 44

Article No.:
12.01.057 (ceramic body)
12.01.058 (polycarbonate body)

Pack:
10 pcs.



Tree-pole socket-outlet
IEC 60884-1, CEE7
16A/440V; IP 44

Article No.:
12.01.059 (ceramic body)

Pack:
14 pcs.



Light push-button
IEC 60669-1; IP 44

Article No.:
10A/250V
12.01.011 (screwless connection)
12.01.031 (connection with screws)
16A/250V
12.01.631 (connection with screws)

Pack:
20 pcs.



Bell push-button
IEC 60669-1; IP 44

Article No.:
10A/250V
12.01.010 (screwless connection)
12.01.030 (connection with screws)
16A/250V
12.01.630 (connection with screws)

Pack:
20 pcs.



Blind control button
IEC 60669-1; IP 44

Article No.:
10A/250V
12.01.018 (screwless connection)
12.01.038 (connection with screws)
16A/250V
12.01.638 (connection with screws)

Pack:
20 pcs.



Junction box with 4
channels
IEC 60670; CEI EN 60529;
IP 44

Article No.:
12.01.070

Pack:
20 pcs.



Single-pole switch
IEC 60669-1, IP 44

Article No.:
10AX/250V
12.01.001 (screwless connection)
12.01.021 (connection with screws)
16AX/250V
12.01.621 (connection with screws)

Pack:
20 pcs.



Two-circuit switch
IEC 60669-1, IP 44

Article No.:
10AX/250V
12.01.004 (screwless connection)
12.01.024 (connection with screws)
16AX/250V
12.01.624 (connection with screws)

Pack:
20 pcs.



Two-way switch
IEC 60669-1, IP 44

Article No.:
10AX/250V
12.01.005 (screwless connection)
12.01.025 (connection with screws)
16AX/250V
12.01.625 (connection with screws)

Pack:
20 pcs.



Intermediate switch
IEC 60669-1, IP 44

Article No.:
10AX/250V
12.01.006 (screwless connection)
12.01.026 (connection with screws)
16AX/250V
12.01.626 (connection with screws)

Pack:
20 pcs.



SOS push-button
cord operated
IEC 60669-1, IP 44

Article No.:
10AX/250V
12.01.020 (screwless connection)
12.01.040 (connection with screws)

Pack:
20 pcs.



Two-pole socket-outlet
IEC 60884-1, CEE7
16A/250V; IP 44

Article No.:
12.23.050 (Ceramic body)
12.23.051 (polycarbonate body)

Pack:
20 pcs.



Double horizontal
two-pole socket-outlet
IEC 60884-1, CEE7
16A/250V; IP 44

Article No.:
12.23.052 (Ceramic body)
12.23.053 (polycarbonate body)

Pack:
10 pcs.



Double vertical
two-pole socket-outlet
IEC 60884-1, CEE7
16A/250V; IP 44

Article No.:
12.23.057 (Ceramic body)
12.23.058 (polycarbonate body)

Pack:
10 pcs.



Tree-pole socket-outlet
IEC 60884-1, CEE7
16A/440V; IP 44

Article No.:
12.23.059 (ceramic body)

Pack:
14 pcs.



Double-pole switch
IEC 60669-1, IP 44

Article No.:
10AX/250V
12.01.002 (screwless connection)
12.01.022 (connection with screws)
16AX/250V
12.01.622 (connection with screws)

Pack:
20 pcs.



Three-pole switch
IEC 60669-1, IP 44

Article No.:
10AX/250V
12.01.003 (screwless connection)
12.01.023 (connection with screws)
16AX/250V
12.01.623 (connection with screws)

Pack:
20 pcs.



Two-way double-pole
switch
IEC 60669-1, IP 44

Article No.:
10AX/250V
12.01.008 (screwless connection)
12.01.028 (connection with screws)
16AX/250V
12.01.628 (connection with screws)

Pack:
20 pcs.



Double two-way switch
IEC 60669-1, IP 44

Article No.:
10AX/250V
12.01.009 (screwless connection)
12.01.029 (connection with screws)
16AX/250V
12.01.629 (connection with screws)

Pack:
20 pcs.



Jednopolna sklopka
IEC 60669-1, IP 44

Article No.:
10AX/250V
12.23.001 (screwless connection)
12.23.021 (connection with screws)
16AX/250V
12.23.621 (connection with screws)

Pack:
20 pcs.



Serijska sklopka
IEC 60669-1, IP 44

Article No.:
10AX/250V
12.23.004 (screwless connection)
12.23.024 (connection with screws)
16AX/250V
12.23.624 (connection with screws)

Pack:
20 pcs.



Naizmeni na sklopka
IEC 60669-1, IP 44

Article No.:
10AX/250V
12.23.005 (screwless connection)
12.23.025 (connection with screws)
16AX/250V
12.23.625 (connection with screws)

Pack:
20 pcs.



Unakrsna sklopka
IEC 60669-1, IP 44

Article No.:
10AX/250V
12.23.006 (screwless connection)
12.23.026 (connection with screws)
16AX/250V
12.23.626 (connection with screws)

Pack:
20 pcs.



Potezni taster SOS
IEC 60669-1, IP 44

Article No.:
10AX/250V
12.23.020 (screwless connection)
12.23.040 (connection with screws)

Pack:
20 pcs.



Double-pole switch
IEC 60669-1; IP 44

Article No.:
10AX/250V
12.23.002 (screwless connection)
12.23.022 (connection with screws)
16AX/250V
12.23.622 (connection with screws)

Pack:
20 pcs.



Three-pole switch
IEC 60669-1; IP 44

Article No.:
10A/250V
12.23.003 (screwless connection)
12.23.023 (connection with screws)
16AX/250V
12.23.623 (connection with screws)

Pack:
20 pcs.



Two-way double-pole
switch
IEC 60669-1; IP 44

Article No.:
10AX/250V
12.23.008 (screwless connection)
12.23.028 (connection with screws)
16AX/250V
12.23.628 (connection with screws)

Pack:
20 pcs.



Double two-way switch
IEC 60669-1; IP 44

Article No.:
10AX/250V
12.23.009 (screwless connection)
12.23.029 (connection with screws)
16AX/250V
12.23.629 (connection with screws)

Pack:
20 pcs.



Two-pole socket-outlet
"F" type (French standar)
IEC 60884-1; CEE7
16A/250V; IP 44

Article No.:
12.01.061
(polycarbonate body)

Pack:
20 pcs.



Two-pole socket-outlet
with protection "F" type
(French standar)
IEC 60884-1; CEE7
16A/250V; IP 44

Article No.:
12.01.062
(polycarbonate body)

Pack:
20 pcs.



Double horizontal two-pole
socket-outlet "F" type
(French standar)
IEC 60884-1; CEE7
16A/250V; IP 44

Article No.:
12.01.065
(polycarbonate body)

Pack:
10 pcs.



Double vertical two-pole
socket-outlet "F" type
(French standar)
IEC 60884-1; CEE7
16A/250V; IP 44

Article No.:
12.01.068
(polycarbonate body)

Pack:
10 pcs.



Light push-button
IEC 60669-1; IP 44

Article No.:
10A/250V
12.23.011 (screwless connection)
12.23.031 (connection with screws)
16A/250V
12.23.631 (connection with screws)

Pack:
20 pcs.



Bell push-button
IEC 60669-1; IP 44

Article No.:
10A/250V
12.23.010 (screwless connection)
12.23.030 (connection with screws)
16A/250V
12.23.630 (connection with screws)

Pack:
20 pcs.



Blind control button
IEC 60669-1; IP 44

Article No.:
10A/250V
12.23.018 (screwless connection)
12.23.038 (connection with screws)
16A/250V
12.23.638 (connection with screws)

Pack:
20 pcs.



Junction box with 4
channels
IEC 60670; CEI EN 60529;
IP 44

Article No.:
12.23.070

Pack:
20 pcs.



Two-pole socket-outlet
"F" type (French standar)
IEC 60884-1; CEE7
16A/250V; IP 44

Article No.:
12.23.061
(polycarbonate body)

Pack:
20 pcs.



Two-pole socket-outlet
with protection "F" type
(French standar)
IEC 60884-1; CEE7

Article No.:
12.23.062
(polycarbonate body)

Pack:
20 pcs.



Double horizontal two-pole
socket-outlet "F" type
(French standar)
IEC 60884-1; CEE7

Article No.:
12.23.065
(polycarbonate body)

Pack:
10 pcs.

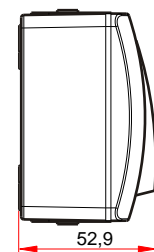
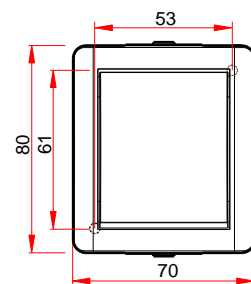


Double vertical two-pole
socket-outlet "F" type
(French standar)
IEC 60884-1; CEE7
16A/250V; IP 44

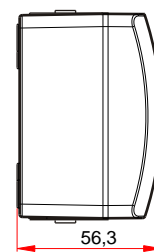
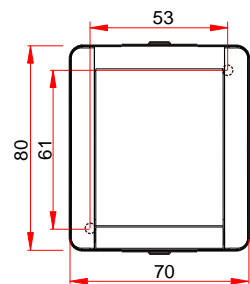
Article No.:
12.01.068
(polycarbonate body)

Pack:
10 pcs.

MOUNTING INSTRUCTIONS

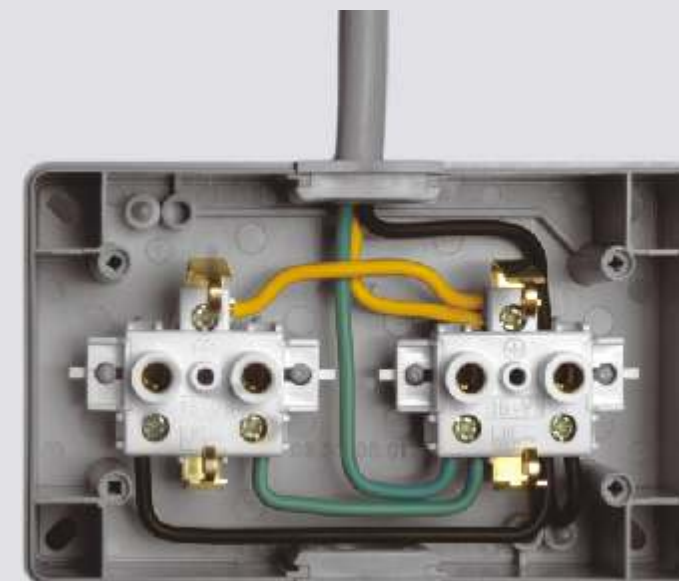


Switches



Socket-outlets

WING OF DOUBLE HORIZONTAL SOCKET-OUTLET SET Q OG



LOWER CASE IN SET Q OG RANGE

